



Valves, Automation & Controls

Series 2483
 FORGED PISTON CHECK VALVE

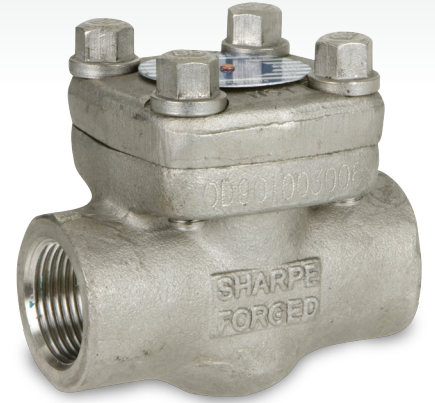
Design Features

- Class 800
- Socket weld ends forged steel or 316L stainless steel
- Threaded ends forged steel or 316L stainless steel
- Bolted bonnet
- NACE MR-0175

Applicable Standards

- Basic Design API 602
- Socket Weld ANSI 16.11
- Threaded ANSI B1.20.1
- Test API 598

Technical Information



Size	Cv	Weight (lbs.)
1/4	1.5	3.4
3/8	2	3.3
1/2	2	3.3
3/4	3	3.9
1	6	5.8
1-1/4	14	8.4
1-1/2	14	9.2
2	25	19.8

Temperature °F	316L Pressure psi	Forged Steel Pressure psi
-20 to 100	1600	1975
200	1365	1810
300	1215	1745
400	1120	1690
500	1050	1610
600	990	1515
650	975	1465
700	960	1415
750	940	1350
800	920	1100
850	900	-

USA 800-766-0076

Fax 323-890-4456

www.smithcooper.com

www.sharpevalves.com

Los Angeles, CA

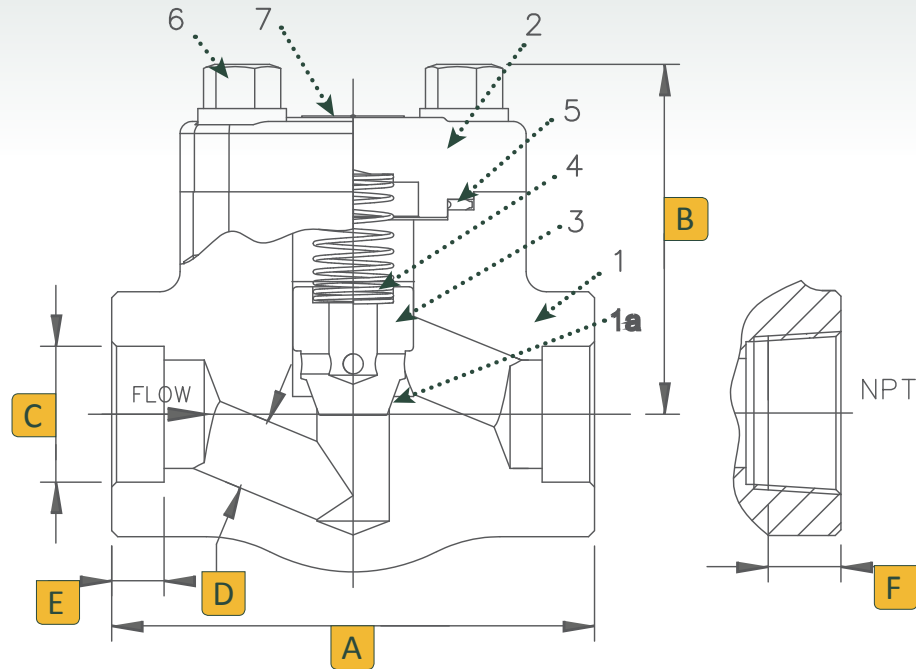
Chicago, IL

Atlanta, GA

Vancouver, WA

Houston, TX

Dimensions, Parts & Materials



Dimensions (Inches)

Size	A	B	C	D	E	F
1/4	3.11	2.40	0.55	0.24	0.39	0.40
3/8	3.11	2.40	0.69	0.28	0.39	0.43
1/2	3.11	2.40	0.85	0.39	0.39	0.53
3/4	3.58	2.40	1.07	0.51	0.51	0.55
1	4.37	3.07	1.33	0.71	0.51	0.69
1-1/4	4.72	3.35	1.68	0.87	0.51	0.71
1-1/2	5.98	4.02	1.92	1.18	0.51	0.72
2	6.77	4.72	2.40	1.38	0.63	0.76

No.	Part Name	Qty	Material
1	Body	1	316L Stainless Steel ASTM A182 or Forged Steel ASTM A105N*
1A	Seat Surface	1	Stellite
2	Cover	1	316L Stainless Steel or Carbon Steel ASTM A105N*
3	Piston	1	316 Stainless Steel or 410 Stainless Steel *
4	Spring	1	316 Stainless Steel
5	Gasket	1	316 + Graphite or 304 + Graphite*
6	Body Bolt	4	B8M Steel ASTM A193 or B7M Steel ASTM A193*
7	Name Plate	1	Aluminum

* Used on Carbon Steel Valves

How to Order

Size	Series	Body	Ends
1/4	2483	4 Forged Steel (Trim 8)	TE Threaded
3/8		6 Stainless Steel (Trim 12)	SW Socket Weld
1/2			
3/4			
1			
1-1/4			
1-1/2			
2			

Example: 1 - 2483 - 6 - TE = 1-2483-6-TE